

For Additional Details, refer to CAD models
posted at www.ifirobotics.com

Printed on 12/14/2006

Sheet 1 of 1

Innovation First, Inc.

Bumper C-Channel

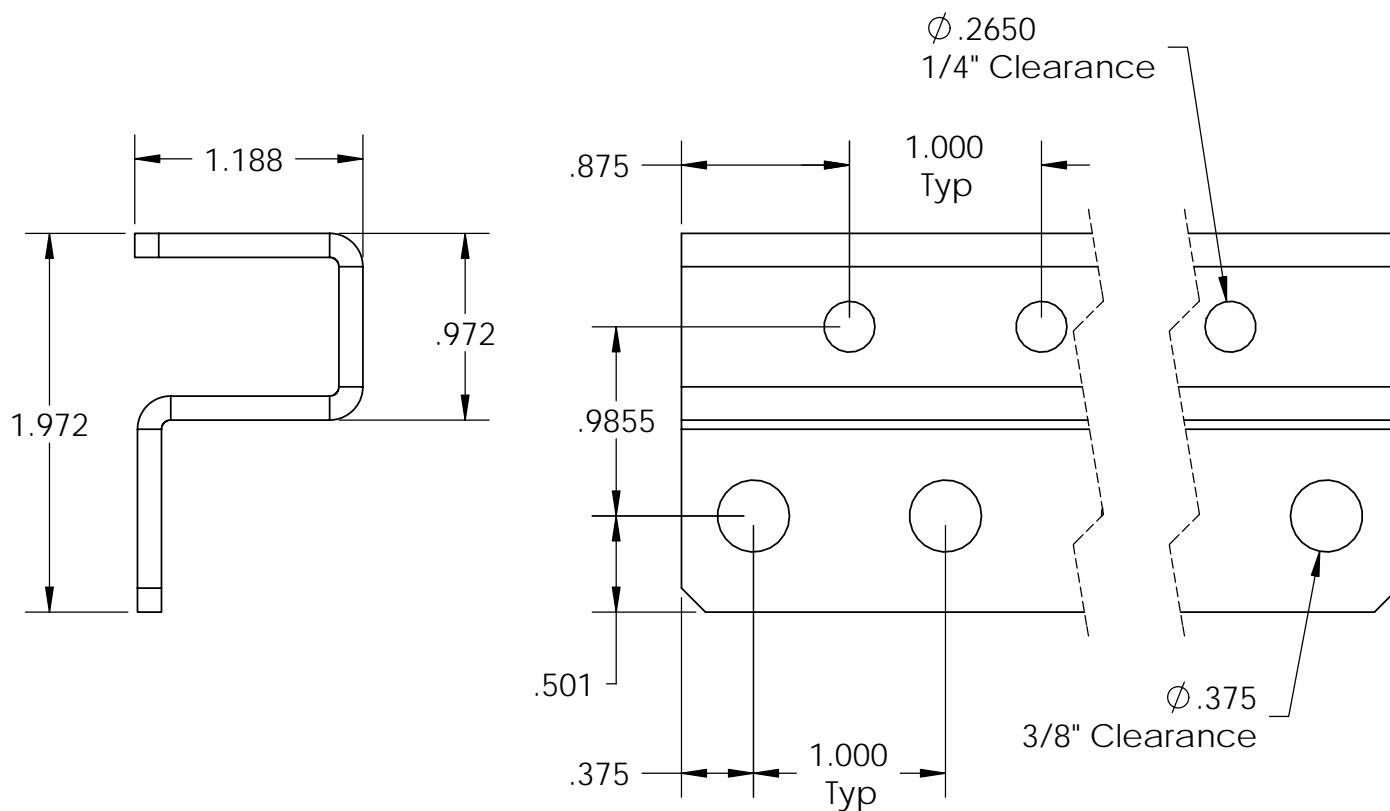
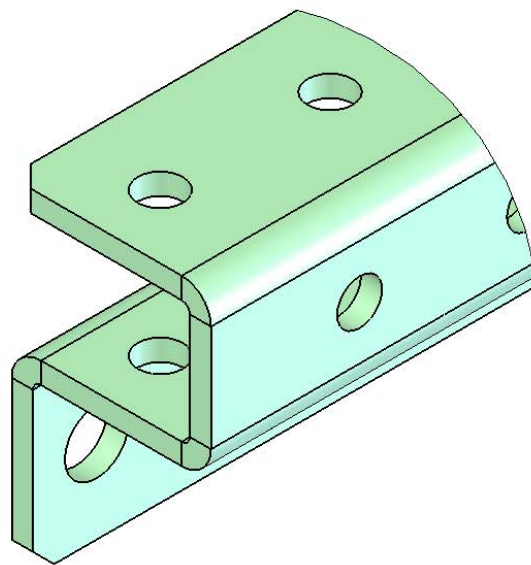
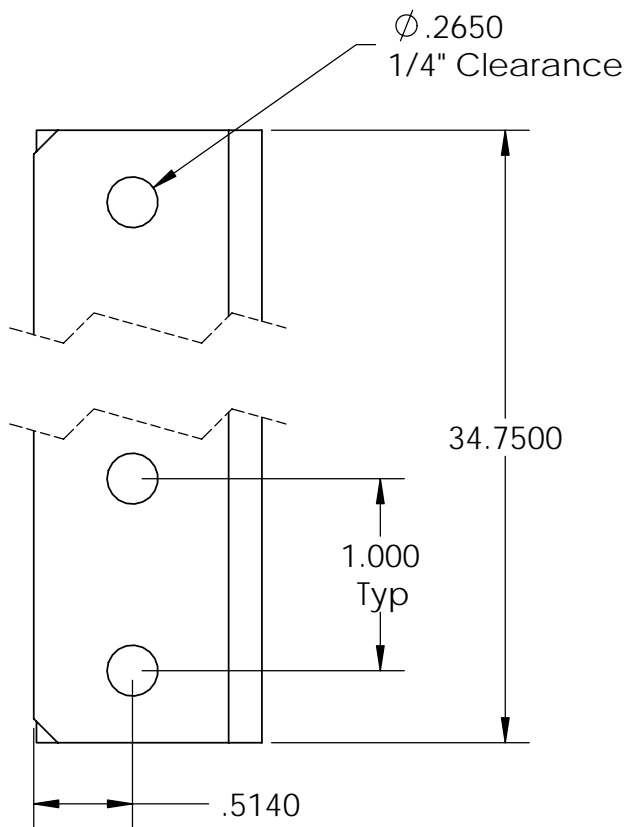
Material
Aluminum 5052 H34, 0.125" Thick

ALL DIMENSIONS ARE IN INCHES.

PROPRIETARY AND CONFIDENTIAL

Dwg No & Rev

KITBOT-BUMPER RevE



For Additional Details, refer to CAD models
posted at www.ifiroboitics.com

Printed on 12/14/2006

Sheet 1 of 1

Innovation First, Inc.

Main Chassis Rail

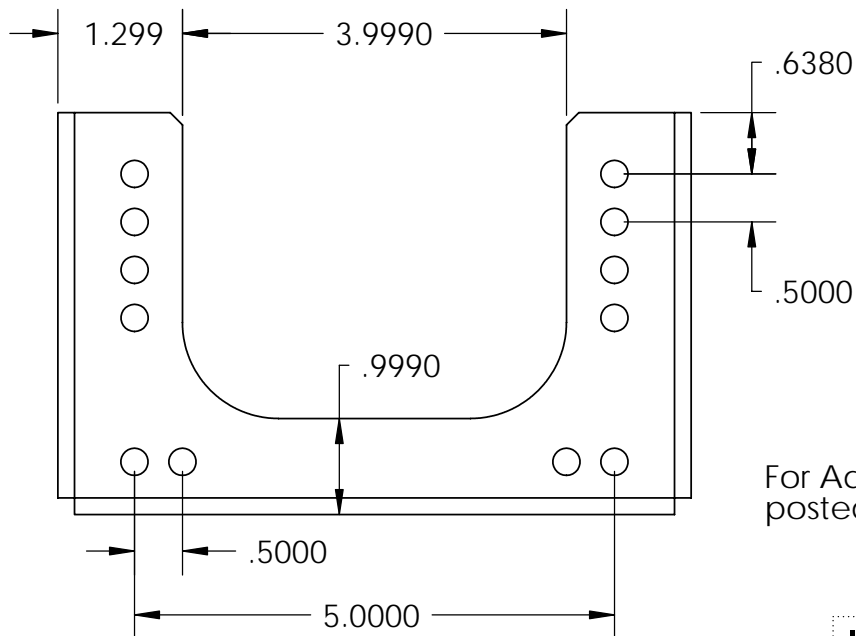
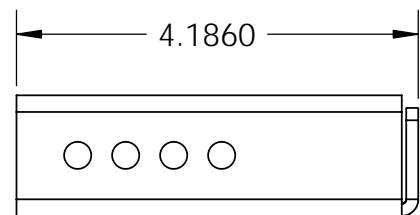
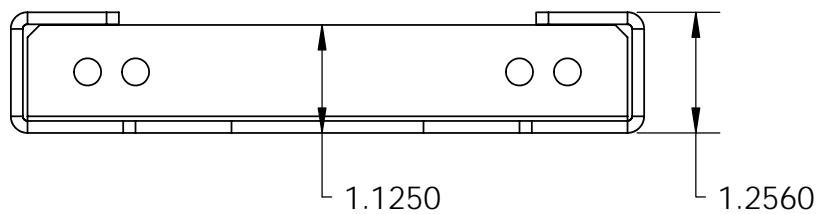
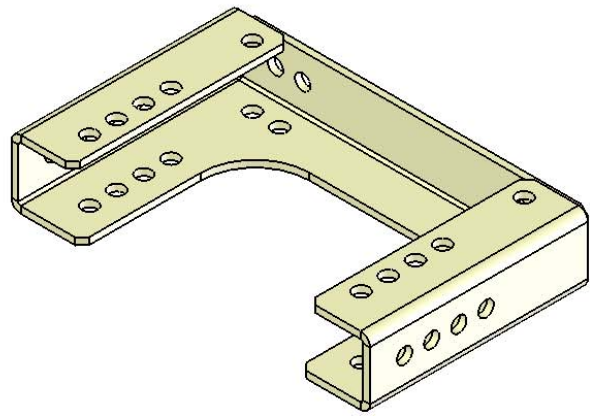
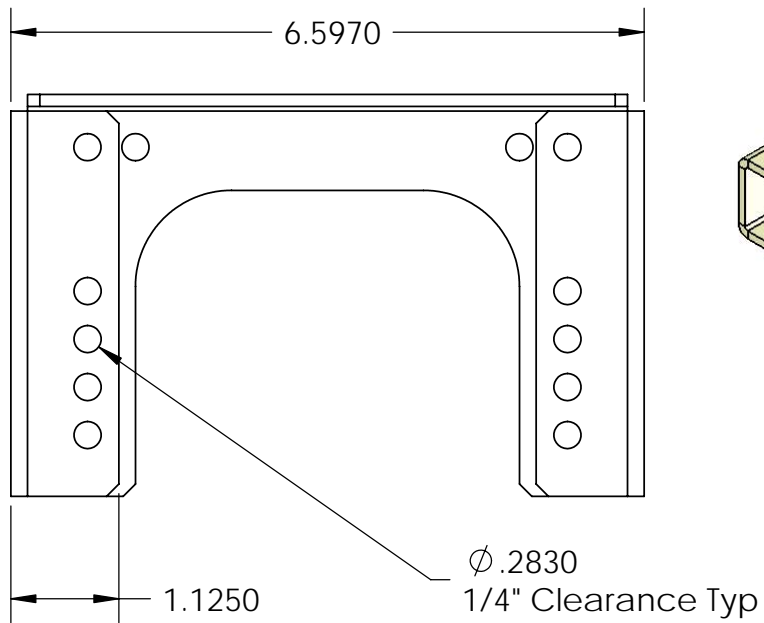
Material
Aluminum 5052 H34, 0.125" Thick

ALL DIMENSIONS ARE IN INCHES.

PROPRIETARY AND CONFIDENTIAL

Dwg No & Rev

KITBOT-RAIL RevF



For Additional Details, refer to CAD models
posted at www.ifrobotics.com

Printed on 12/14/2006

Sheet 1 of 1

Innovation First, Inc.

Chassis End Cap

Material

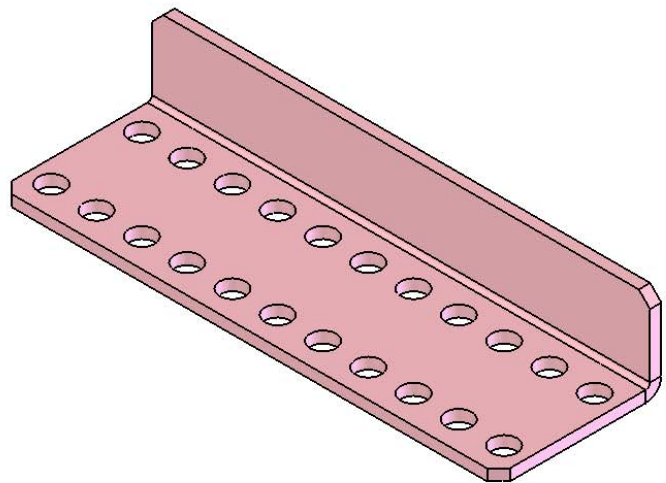
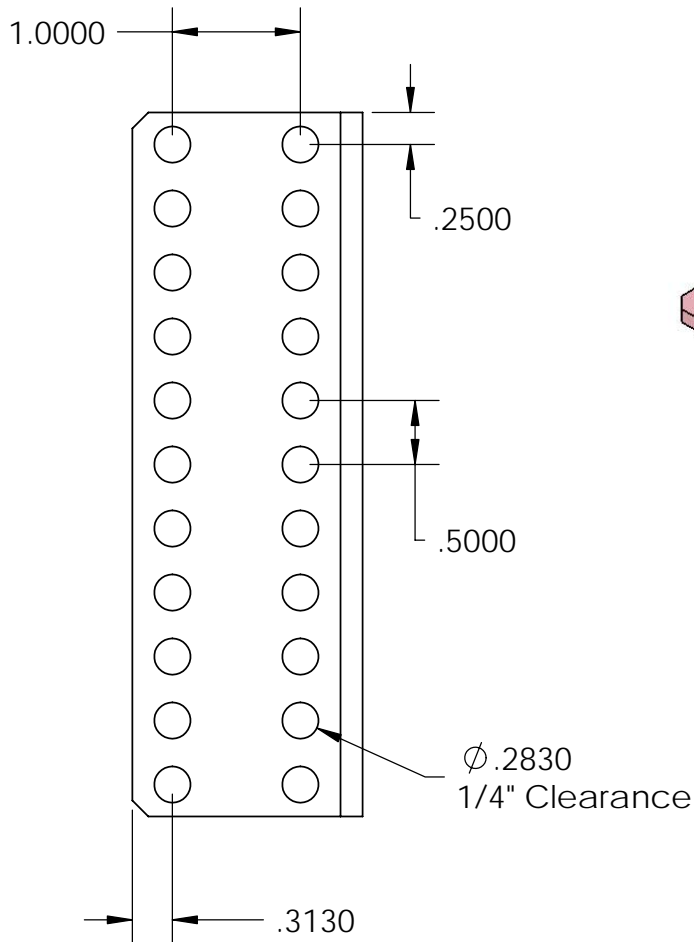
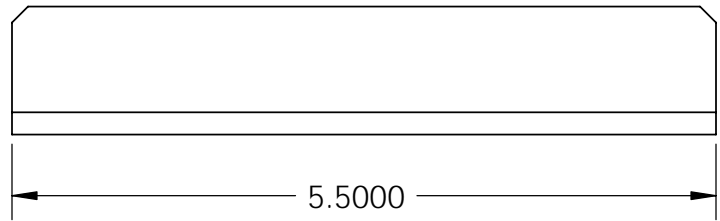
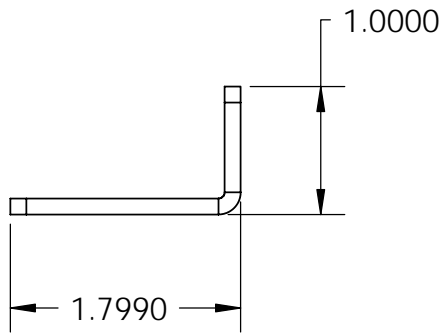
Aluminum 5052 H34, 0.125" Thick

ALL DIMENSIONS ARE IN INCHES.

PROPRIETARY AND CONFIDENTIAL

Dwg No & Rev

KITBOT-ENDCAP RevE



For Additional Details, refer to CAD models
posted at www.ifrobotics.com

Printed on 12/14/2006

Sheet 1 of 1

Innovation First, Inc.

Chassis Stiffener Angle

Material
Aluminum 5052 H34, 0.125" Thick

ALL DIMENSIONS ARE IN INCHES.

PROPRIETARY AND CONFIDENTIAL

Dwg No & Rev

KITBOT-STIFFENER RevE