

Description	6" Omni Wheel		
Dwg No	217-2585		
Project	VEXpro	Sheet 1 of 1	
Release	8/19/2014	ALL DIMENSIONS ARE IN INCHES [MM].	

WWW.VEXPRO.COM

DUAL VERSAKEY PATTERN

The drawing includes the following dimensions and features:

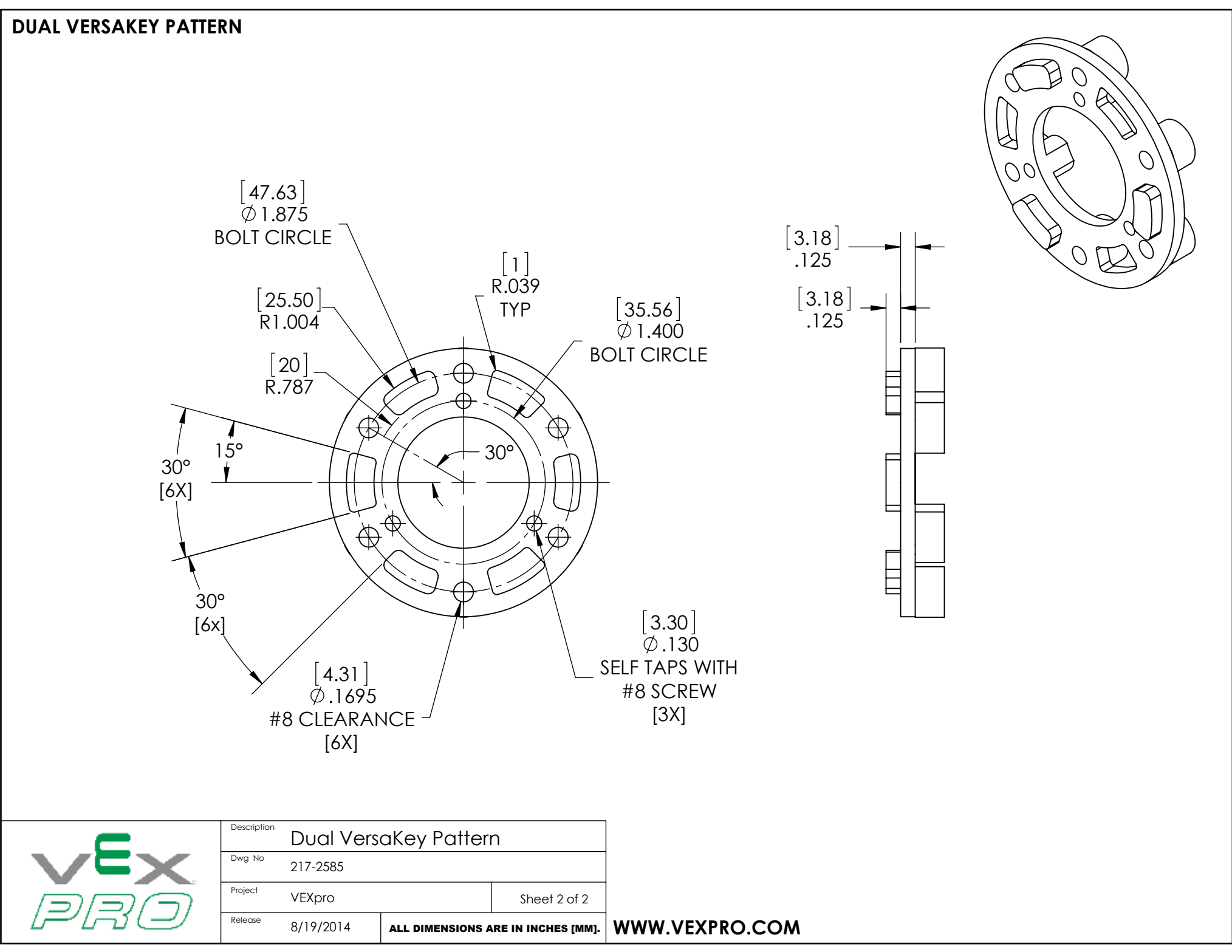
- Top View:**
 - Outer diameter: $[47.63]$ $\phi 1.875$ BOLT CIRCLE
 - Inner diameter: $[35.56]$ $\phi 1.400$ BOLT CIRCLE
 - Keyway width: $[25.50]$ R1.004
 - Keyway depth: $[20]$ R.787
 - Keyway radius: $[1]$ R.039 TYP
 - Keyway angle: 30°
 - Keyway clearance: $[4.31]$ $\phi .1695$ #8 CLEARANCE [6X]
 - Keyway angle: 15°
 - Keyway angle: 30° [6X]
 - Keyway angle: 30° [6X]
 - Self taps with #8 screw: $[3.30]$ $\phi .130$ SELF TAPS WITH #8 SCREW [3X]
- Side View:**
 - Keyway depth: $[3.18]$.125
 - Keyway depth: $[3.18]$.125
- Isometric View:** Shows the 3D shape of the pattern.

Description	
Dual VersaKey Pattern	
Dwg No 217-2585	
Project	VEXpro
Release	8/19/2014

ALL DIMENSIONS ARE IN INCHES [MM].

VEX PRO

WWW.VEXPRO.COM



DUAL VERSAKEY PATTERN

The drawing includes the following dimensions and features:

- Top View:**
 - Outer diameter: $[47.63]$ $\phi 1.875$ BOLT CIRCLE
 - Inner diameter: $[35.56]$ $\phi 1.400$ BOLT CIRCLE
 - Keyway width: $[25.50]$ R1.004
 - Keyway depth: $[20]$ R.787
 - Keyway radius: $[1]$ R.039 TYP
 - Keyway angle: 30°
 - Keyway clearance: $[4.31]$ $\phi .1695$ #8 CLEARANCE [6X]
 - Keyway angle: 15°
 - Keyway angle: 30° [6X]
 - Keyway angle: 30° [6X]
 - Self taps with #8 screw: $[3.30]$ $\phi .130$ SELF TAPS WITH #8 SCREW [3X]
- Side View:**
 - Keyway depth: $[3.18]$.125
 - Keyway depth: $[3.18]$.125
- Isometric View:** Shows the 3D shape of the pattern.

Description	
Dual VersaKey Pattern	
Dwg No 217-2585	
Project	VEXpro
Release	8/19/2014

ALL DIMENSIONS ARE IN INCHES [MM].

VEX PRO

WWW.VEXPRO.COM

DUAL VERSAKEY PATTERN

The drawing includes the following dimensions and features:

- Top View:**
 - Outer diameter: $[47.63]$ $\phi 1.875$ BOLT CIRCLE
 - Inner diameter: $[35.56]$ $\phi 1.400$ BOLT CIRCLE
 - Keyway width: $[25.50]$ R1.004
 - Keyway depth: $[20]$ R.787
 - Keyway radius: $[1]$ R.039 TYP
 - Keyway angle: 30°
 - Keyway clearance: $[4.31]$ $\phi .1695$ #8 CLEARANCE [6X]
 - Keyway angle: 15°
 - Keyway angle: 30° [6X]
 - Keyway angle: 30° [6X]
 - Self taps with #8 screw: $[3.30]$ $\phi .130$ SELF TAPS WITH #8 SCREW [3X]
- Side View:**
 - Keyway depth: $[3.18]$.125
 - Keyway width: $[3.18]$.125
- Isometric View:** Shows the 3D shape of the pattern.

Description	
Dual VersaKey Pattern	
Dwg No 217-2585	
Project	VEXpro
Release	8/19/2014

ALL DIMENSIONS ARE IN INCHES [MM].

VEX PRO

WWW.VEXPRO.COM

DUAL VERSAKEY PATTERN

The drawing includes the following dimensions and features:

- Top View:**
 - Outer diameter: $[47.63]$ $\phi 1.875$ BOLT CIRCLE
 - Inner diameter: $[35.56]$ $\phi 1.400$ BOLT CIRCLE
 - Keyway width: $[25.50]$ R1.004
 - Keyway depth: $[20]$ R.787
 - Keyway radius: $[1]$ R.039 TYP
 - Keyway angle: 30°
 - Keyway clearance: $[4.31]$ $\phi .1695$ #8 CLEARANCE [6X]
 - Keyway angle: 15°
 - Keyway angle: 30° [6X]
 - Keyway angle: 30° [6X]
 - Self taps with #8 screw: $[3.30]$ $\phi .130$ SELF TAPS WITH #8 SCREW [3X]
- Side View:**
 - Keyway depth: $[3.18]$.125
 - Keyway width: $[3.18]$.125
- Isometric View:** Shows the 3D shape of the pattern.

Description	
Dual VersaKey Pattern	
Dwg No 217-2585	
Project	VEXpro
Release	8/19/2014

ALL DIMENSIONS ARE IN INCHES [MM].

VEX PRO

WWW.VEXPRO.COM