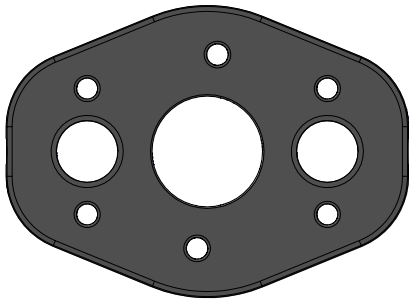
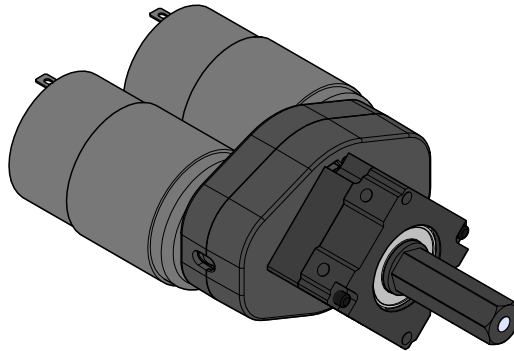


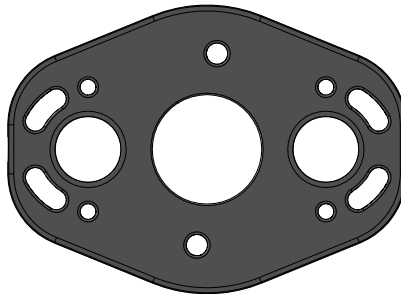
# Dual Input Assembly Instructions

*Assembly Instructions for VersaPlanetary v1 and VersaPlanetary v2*

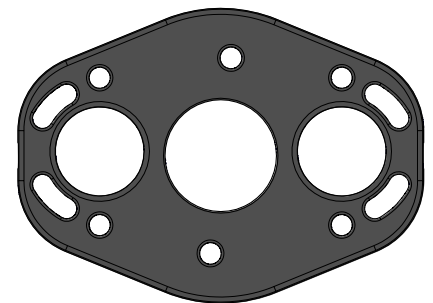
VersaPlanetary v2 Shown



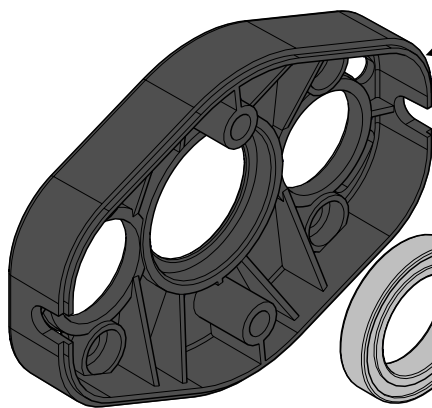
BAG Motor Input Housing



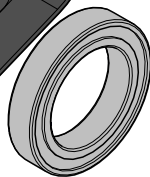
RS-550 Motor Input Housing



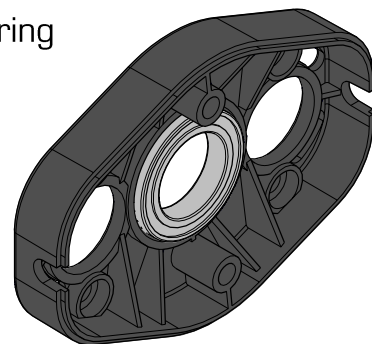
775pro (RS-775 Series)  
Motor Input Housing



Motor Input Housing



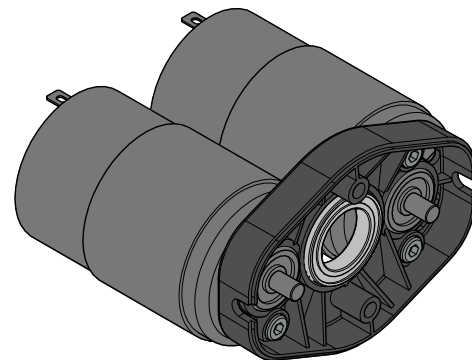
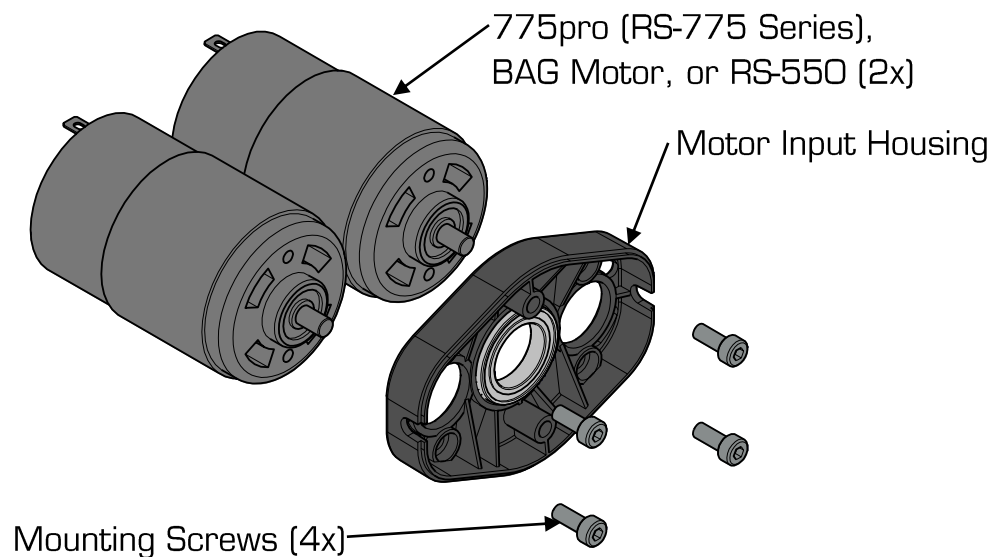
17mm Unflanged Bearing



## Step 1:

Select the appropriate Input Housing for your motors. Then insert a 17mm unflanged bearing into the housing as shown.

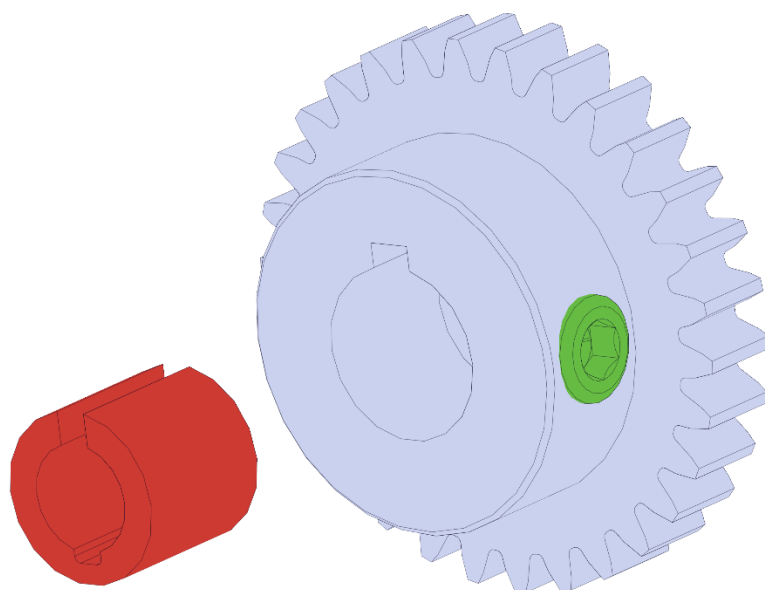
## Dual Input Assembly Instructions






Motor	Screw
BAG Motor	M4 x 10mm
RS-550	M3 x 8MM
RS-775 Series	M4 x 10MM

### Step 2:

Mount each motor with the appropriate mounting screws.



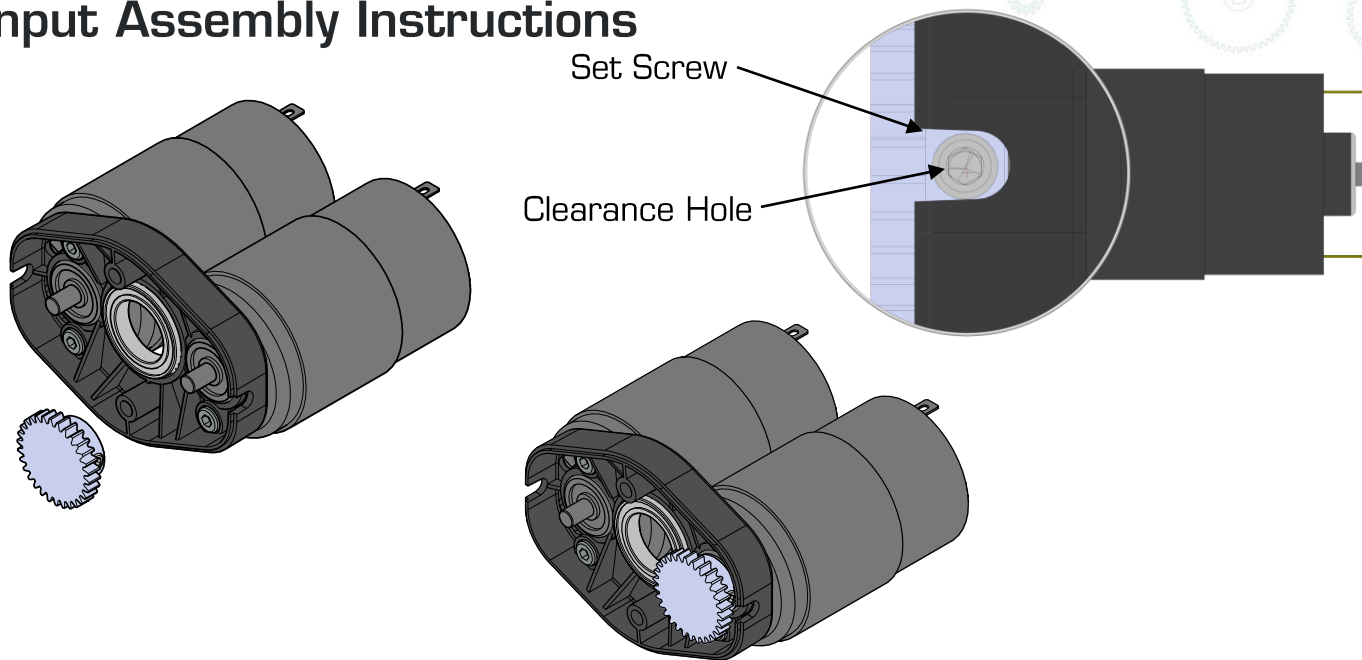
-  BAG Motor Collar (1x)
-  RS-550 Motor Collar (1x)
-  RS-775 Series Motor Collar (1x)

### Step 3:

Insert the appropriate clamping collar into the input coupler. Take note of the orientation of the collar (highlighted red). The “split” in the collar should align with the notch in the Input Collar s shown.

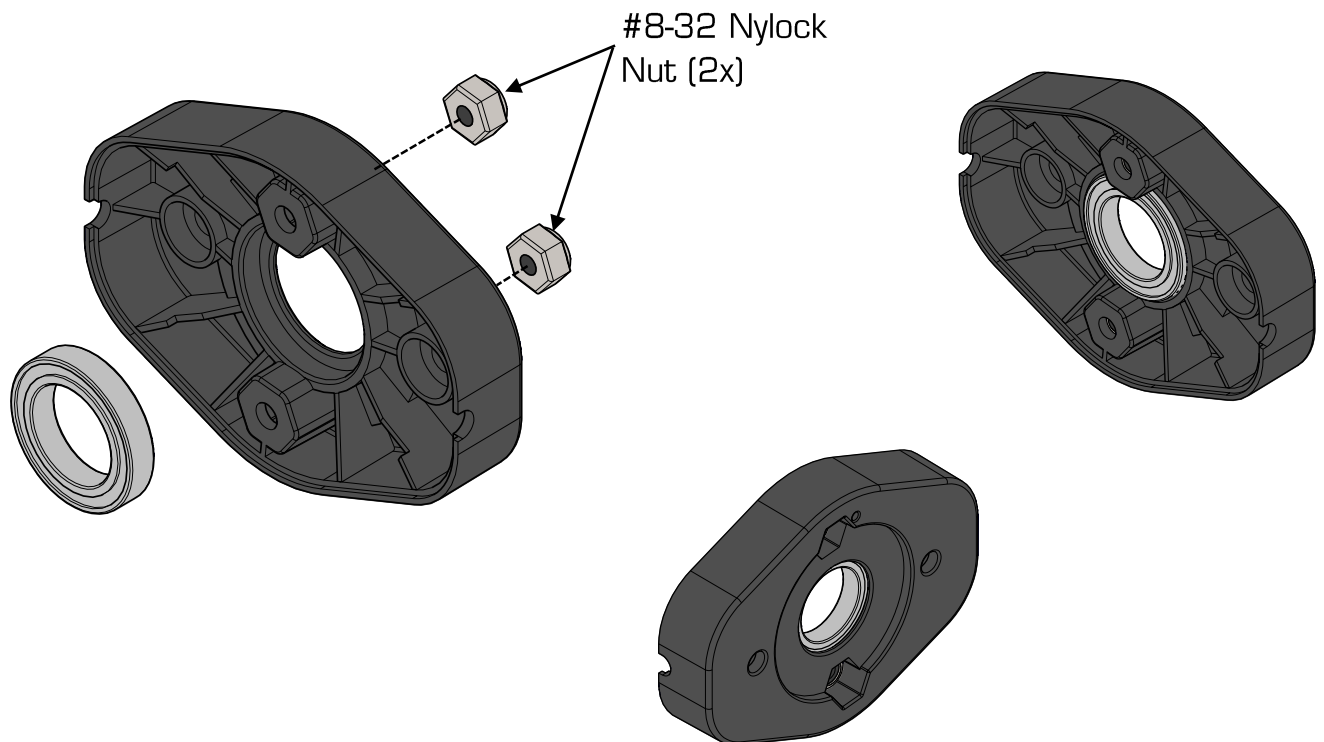
217-3141

## Dual Input Assembly Instructions



### Step 4:

Slide the Input Coupler over the motor shaft until the gear cannot slide any further. Take Care to align the set screw with the clearance hole before tightening. Repeat for both motors.

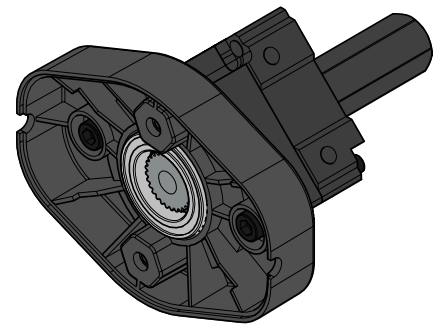
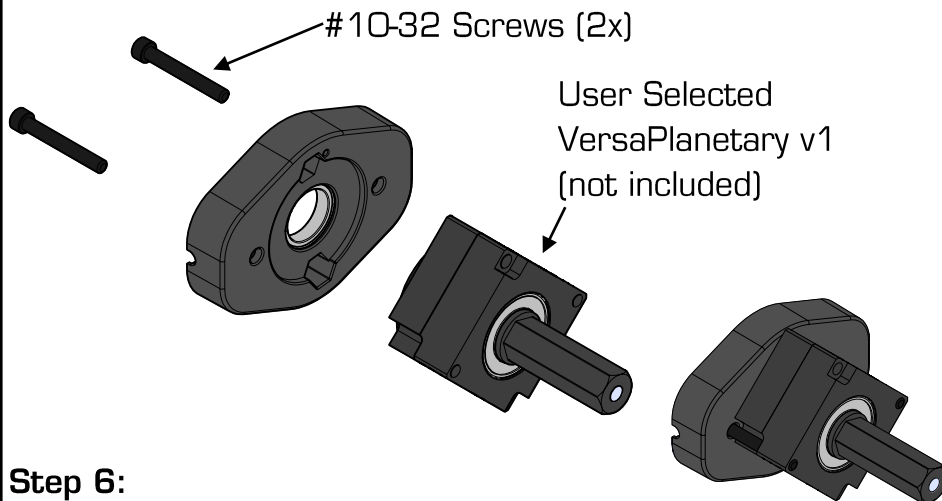


### Step 5:

Insert a 17mm unflanged bearing and two #8-32 Nylock nuts as shown into the Output Housing.

## Dual Input Assembly Instructions

### For VersaPlanetary v1

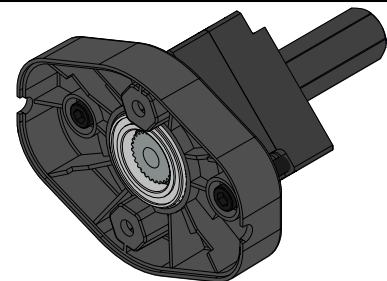
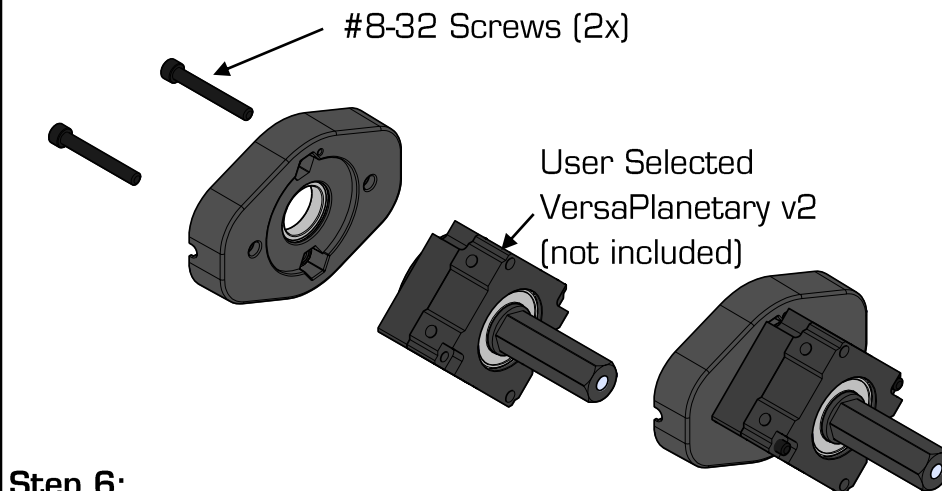


# of Stages	Screw
Output Only	#10-32 x 3/8"
1	#10-32 x 7/8"
2	#10-32 x 1-3/8"

#### Step 6:

Assemble and attach the user selected VersaPlanetary v1 (not included) using two #10-32 screws of a length appropriate for your VersaPlanetary v1.

### For VersaPlanetary v2



# of Stages	Screw
Output Only	#8-32 x 7/8"
1	#8-32 x 1-1/4"
2	#8-32 x 1-3/4"

#### Step 6:

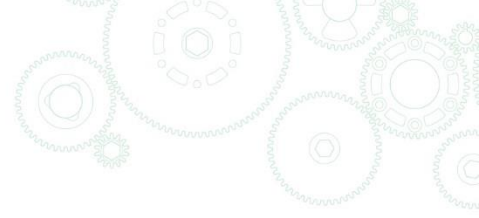
Assemble and attach the user selected VersaPlanetary v2 (not included) using two #8-32 screws of a length appropriate for your VersaPlanetary v2.

**Note:** The Dual Input replaces the Input Housing of the VersaPlanetary. Use of Loctite 222 or equivalent thread locker is recommended with all screws. Ensure your VersaPlanetary spins freely before installation.

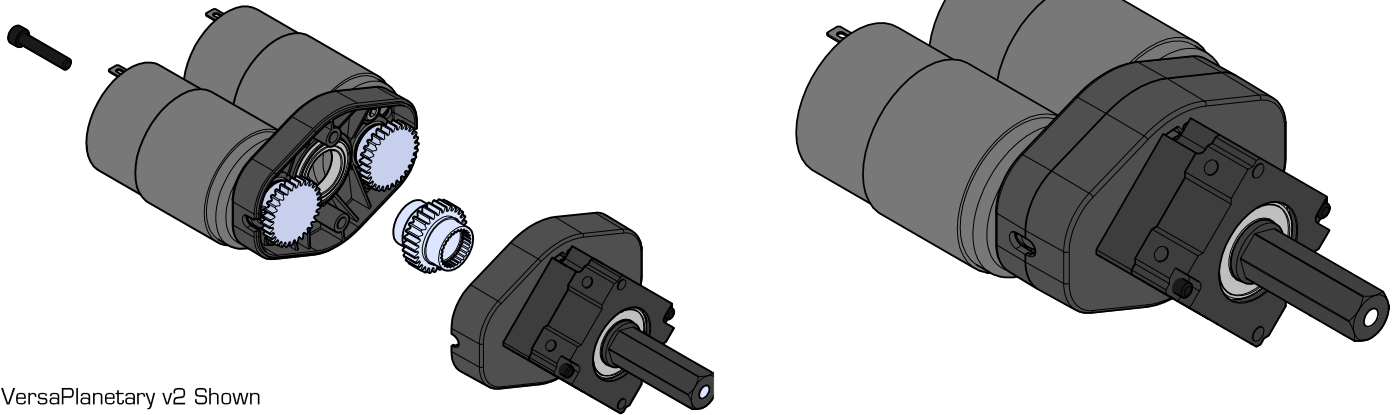
VEXpro VersaPlanetary Gearboxes are not designed for use without grease. Users should add a coating of white lithium grease on all gears before use.

217-3141

## Dual Input Assembly Instructions



← #8-32 x 3/4" Screws



VersaPlanetary v2 Shown

### Step 7:

Insert the Output Shaft. At this point, a liberal application of white lithium grease is required on all gears. Connect the Input and Output Housings using two #8-32 x 3/4" screws and the two #8-32 Nylock nuts inserted in Step 5. Use of thread locker is not recommended with Nylock Nuts.